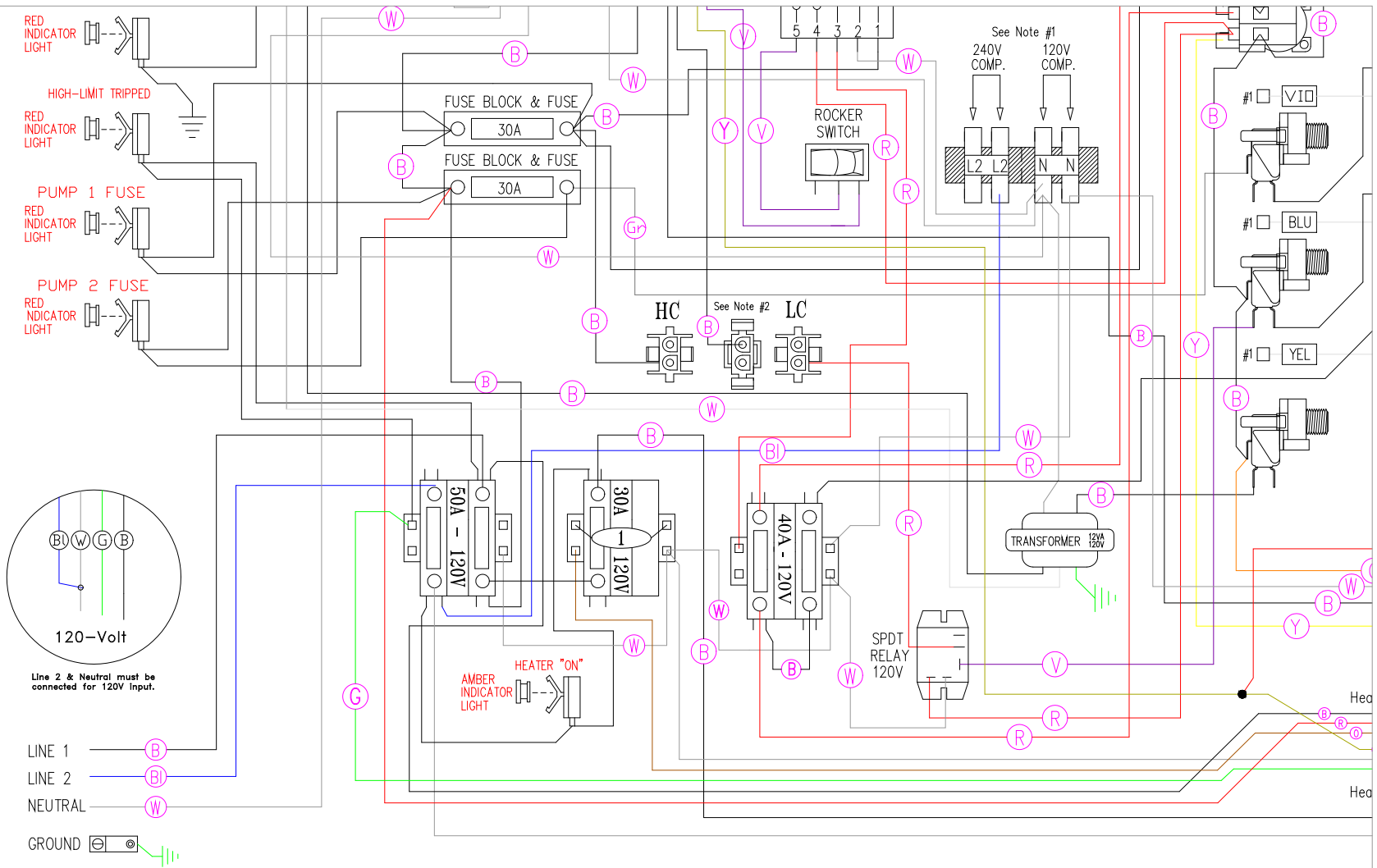


# Hydro-Quip

Manufacture Notes: #1 - Universal System, connecting the White/Component receptacle wire to the corresponding position on the Universal Terminal Block determines component voltage.  
 #2 - Low Current (heater off w/high-speed pump or blower) or High Current (no heater restriction)

Dwg. No.	506G0-DK55	Drawn	MBS	Rev	1	Wire Color Code
Date	07.24.07					
Diagram No.	7027D					
		B - Black	G - Green			
		Br - Brown	Bl - Blue			
		R - Red	V - Violet			
		O - Orange	W - White			
		Y - Yellow	Gr - Gray			



Hydro-Quip

Dwg. No. 506G0-DKS5

Drawn MBS

Manufacture Notes: #1 - Universal System, connecting the White/Component receptacle wire to the corresponding position on the Universal Terminal Block determines component voltage.

#2 - Low Current (heater off w/high-speed pump or blower) or High Current (no heater restriction)

Date 07.24.

Diagram No. 7027